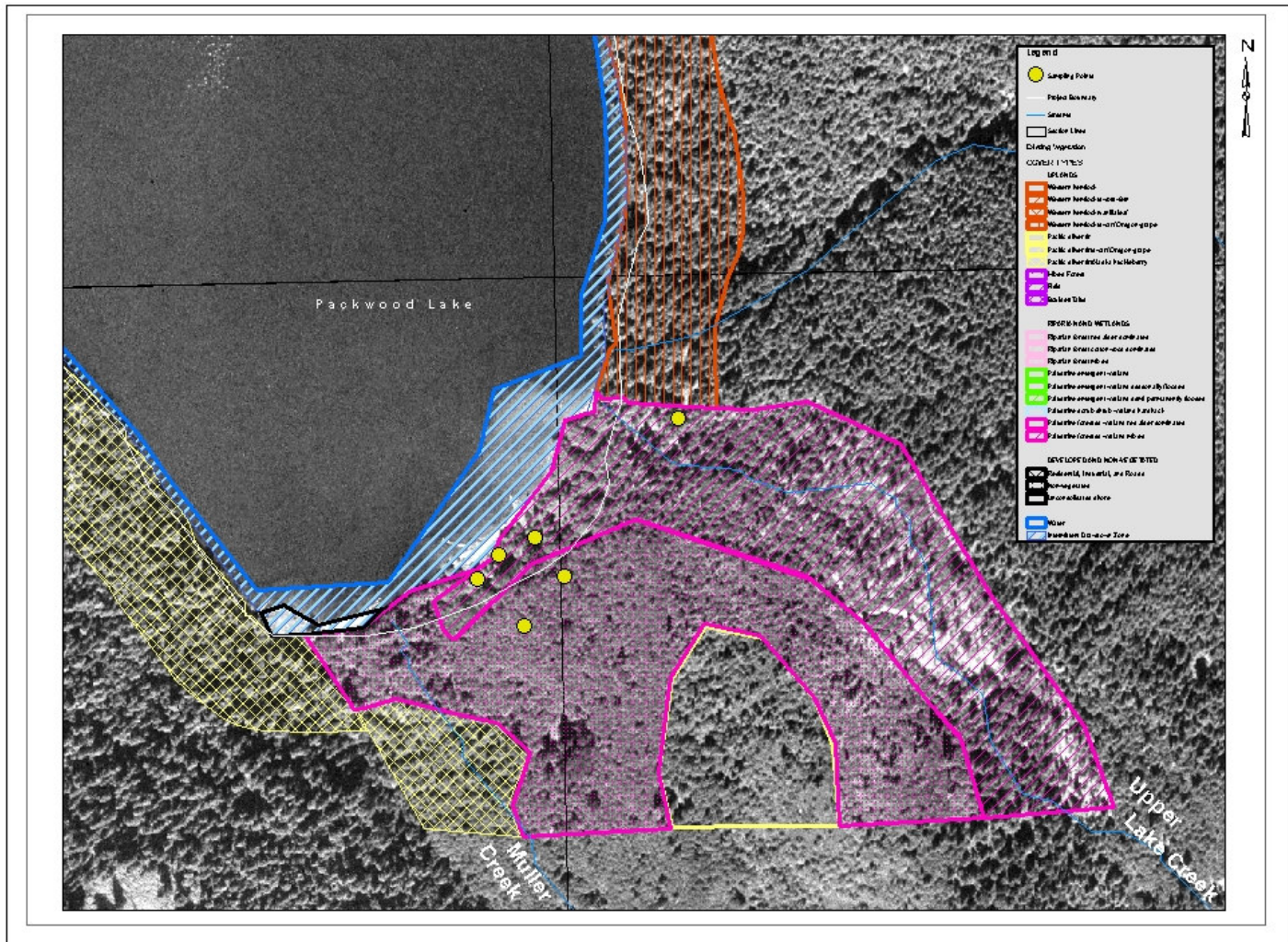
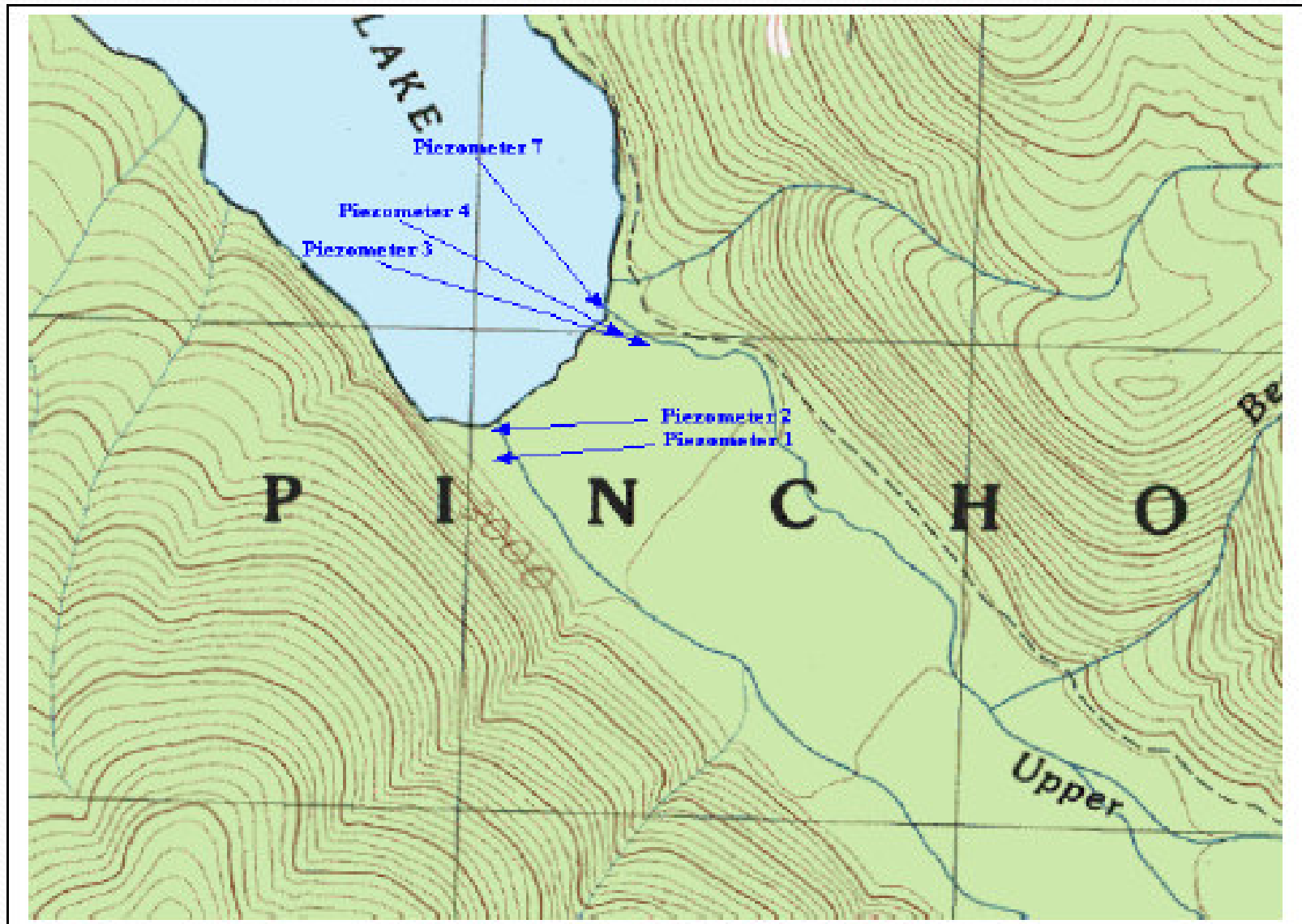


Timing of Maintenance Outage

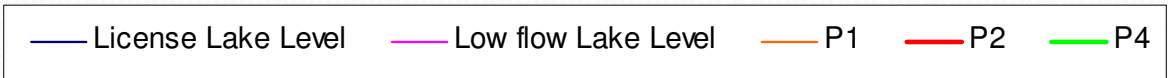
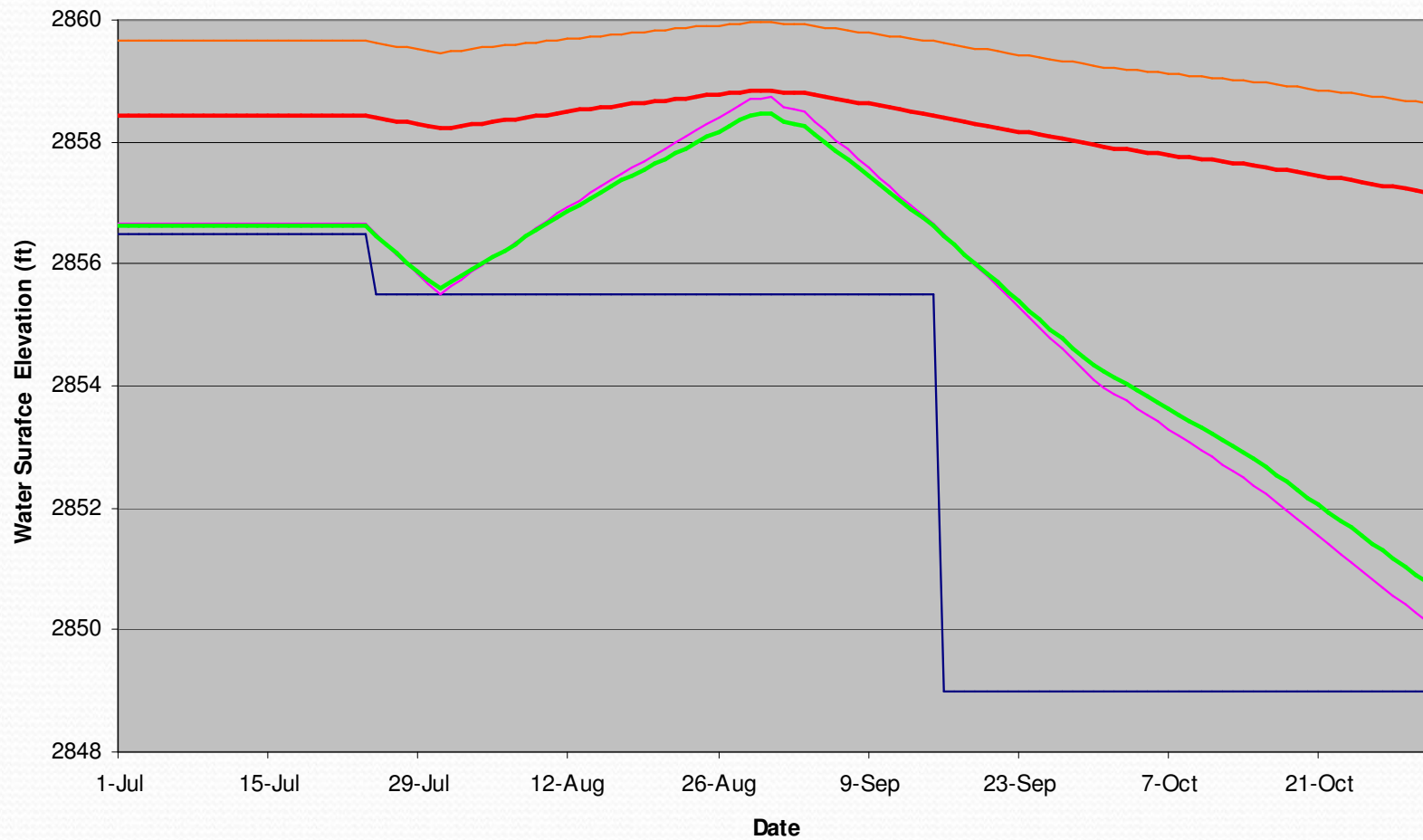
– Issues of Concern

- Wetland Connectivity
 - Wetland complex near Osprey Creek is not responsive to lake level
 - Wetland at upper end of lake: Groundwater level in portion of wetland nearest the shoreline responds to lake level during dry season (July 1 – Oct 31)

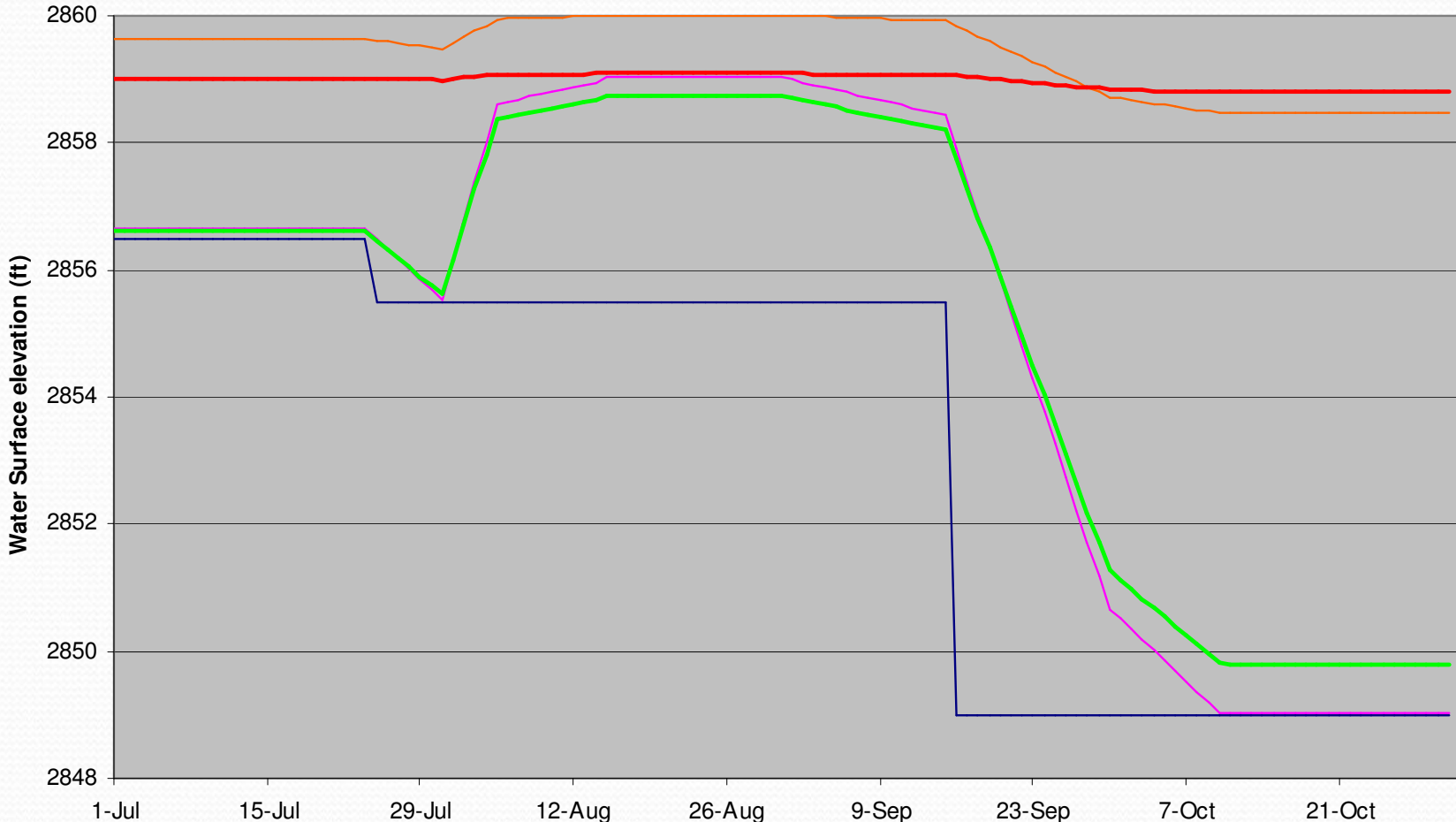




Groundwater Levels for Wetland - Low Inflow



Groundwater Level for Wetland - High Inflow



— License Level — Calculated Lake Level — P1 — P2 — P4

Summary

- Wetland groundwater response to outage drawdown is lowering less than 0.2 ft for most of wetland
- At P₄, groundwater closely tracks lake level
- Groundwater level slightly higher during outage
- Drawdown in latter half of September has limited effect on plants since end of growing season