



**ENERGY
NORTHWEST**

Energy Northwest Columbia Generating Station

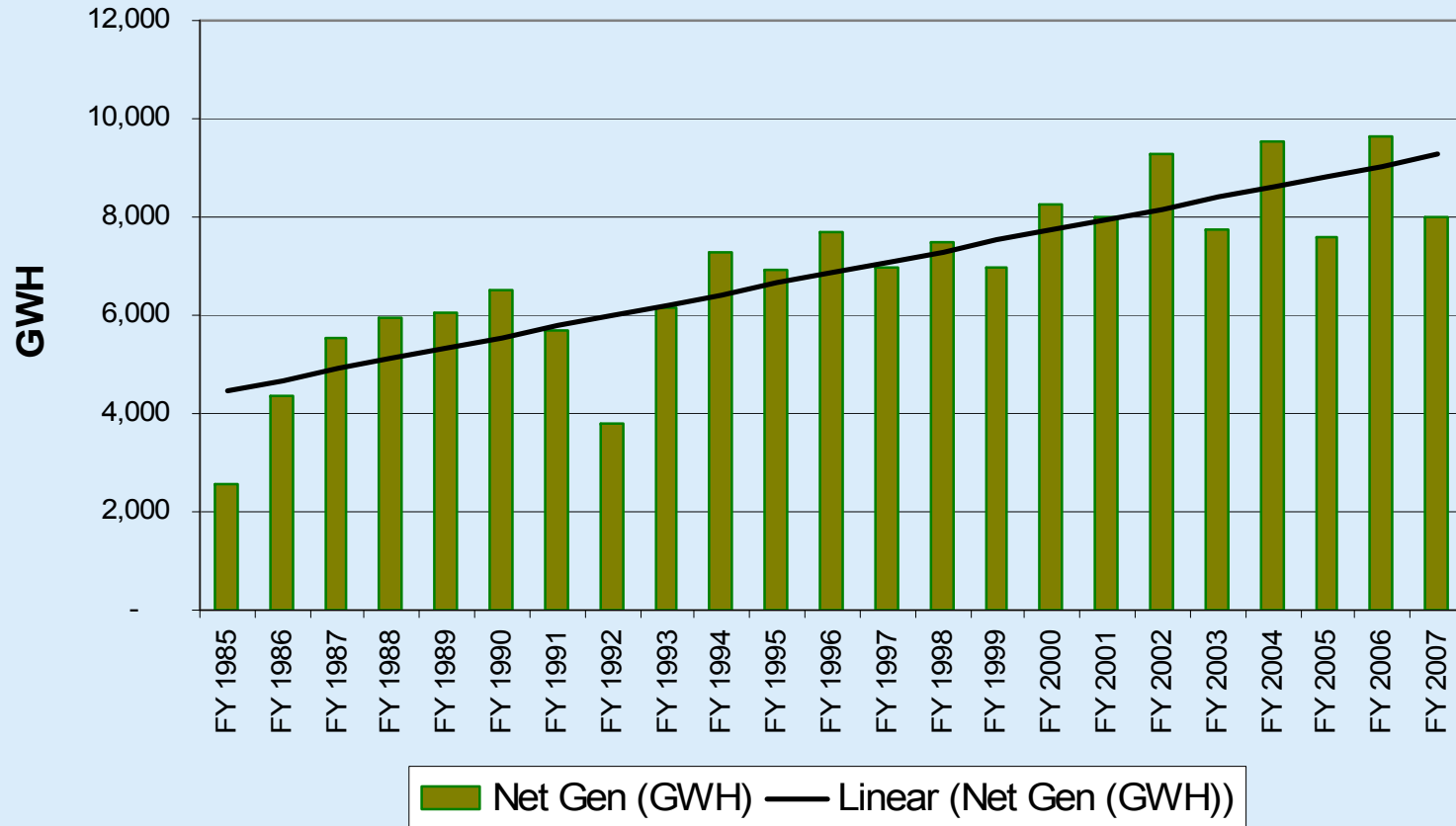
Vic Parrish
Chief Executive Officer

Dale Atkinson
Vice President Nuclear Generation and Chief Nuclear Officer

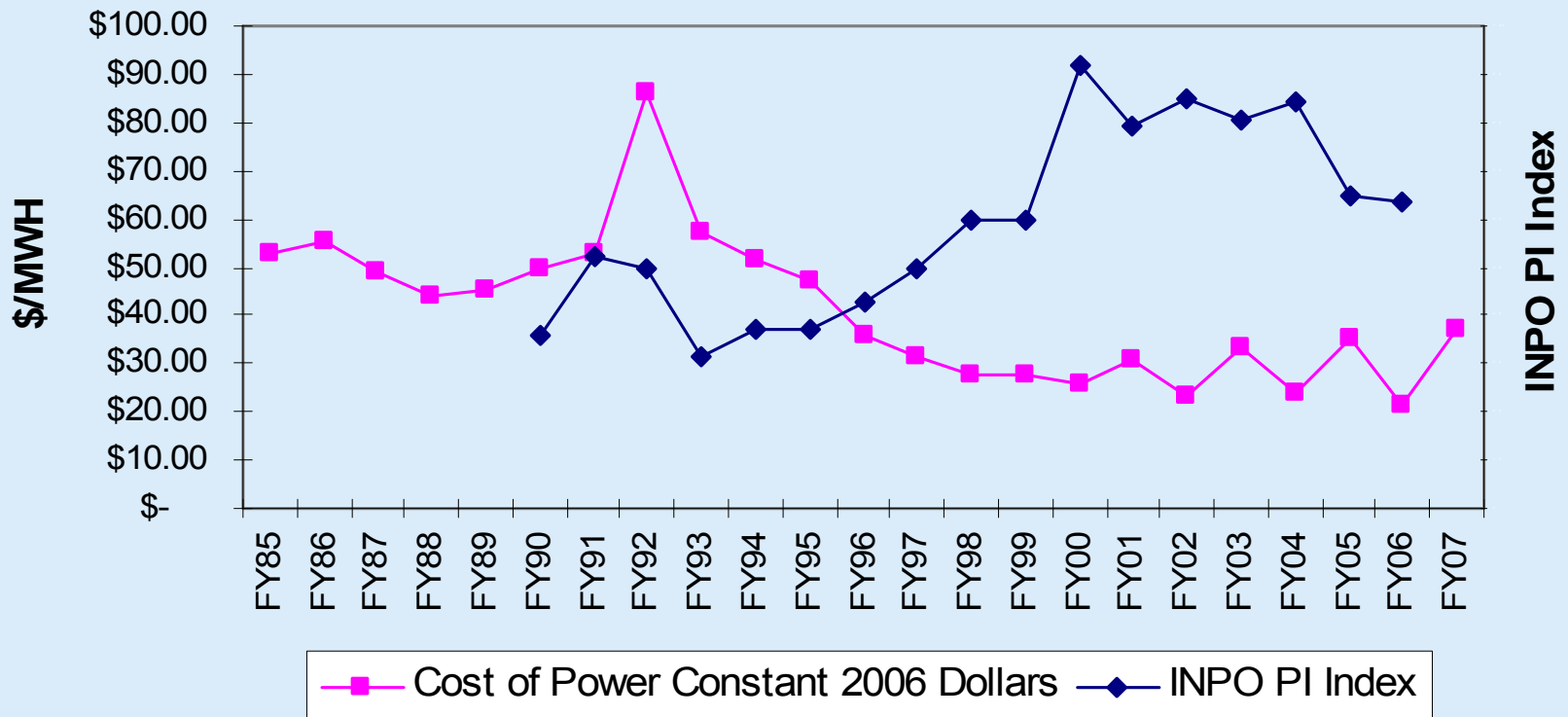
Introduction

- ✦ Columbia Generating Station represents greater than 10% of BPA's firm energy resources in 2007
- ✦ How are we going to protect this valuable regional resource?

CGS Net Generation

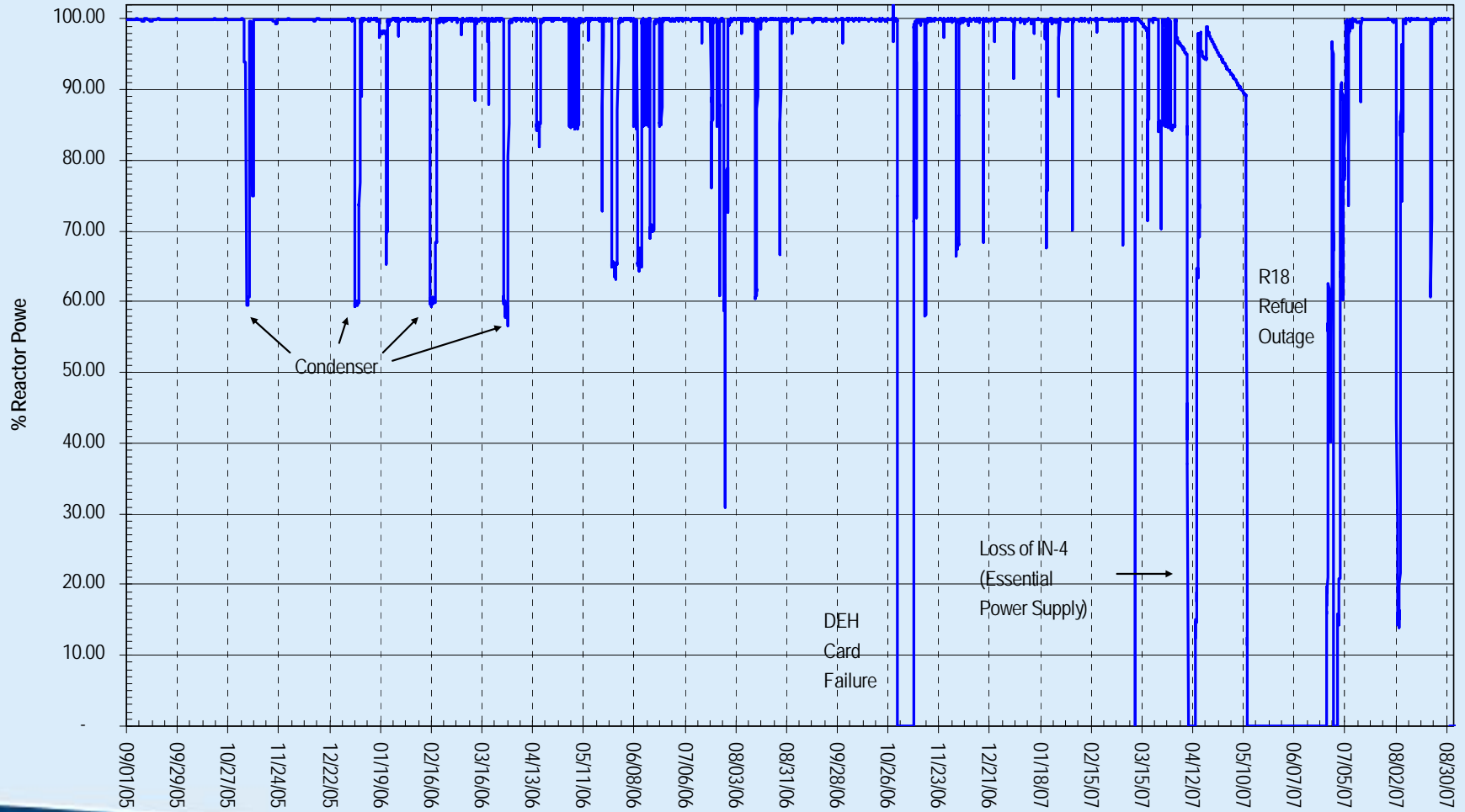


CGS Cost of Power Versus INPO Performance Index

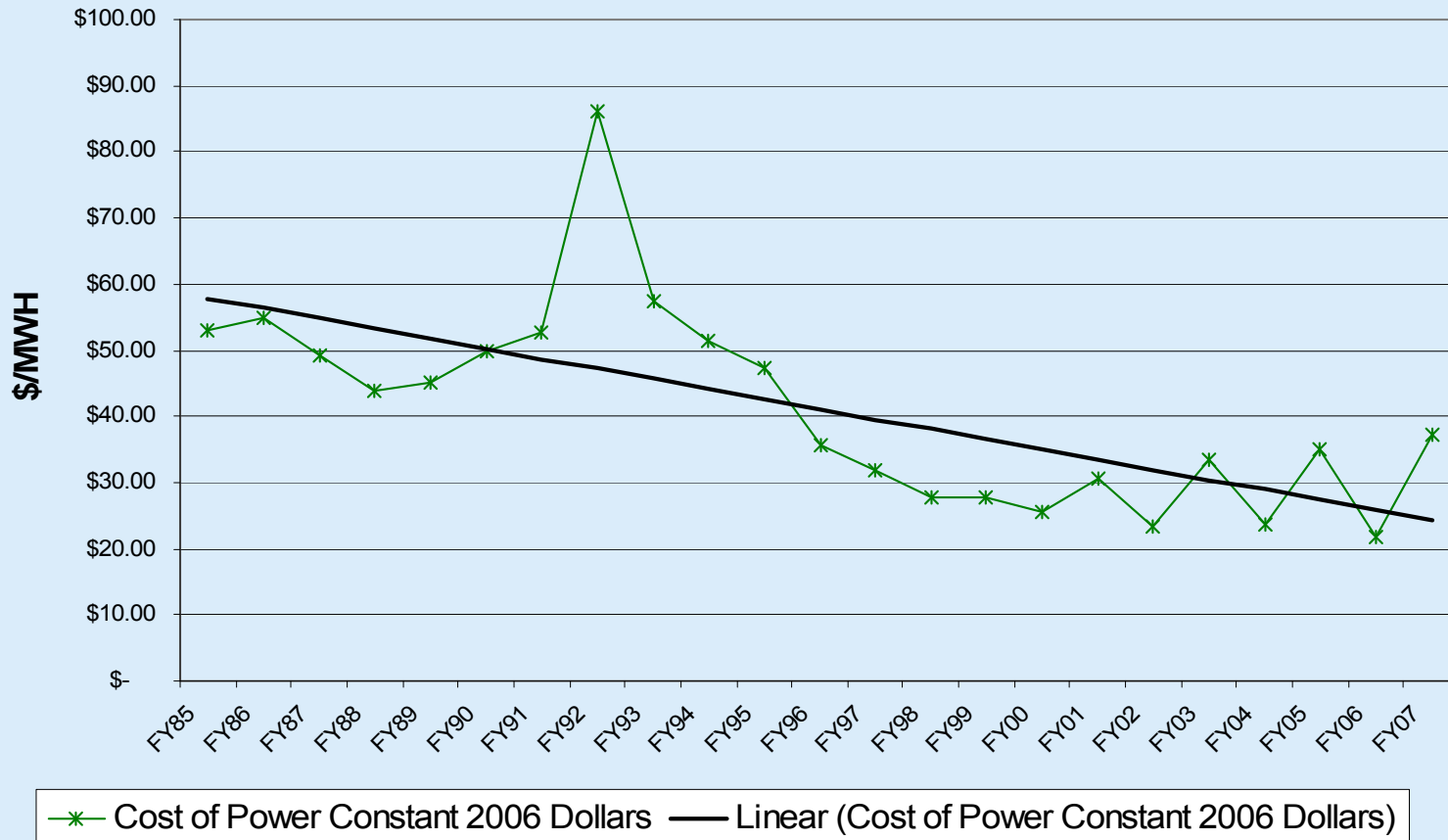


(1)Regional Basis includes O&M, A&G, Capital, Fuel and generating taxes.

Columbia Generating Station -- 2 Year Power History

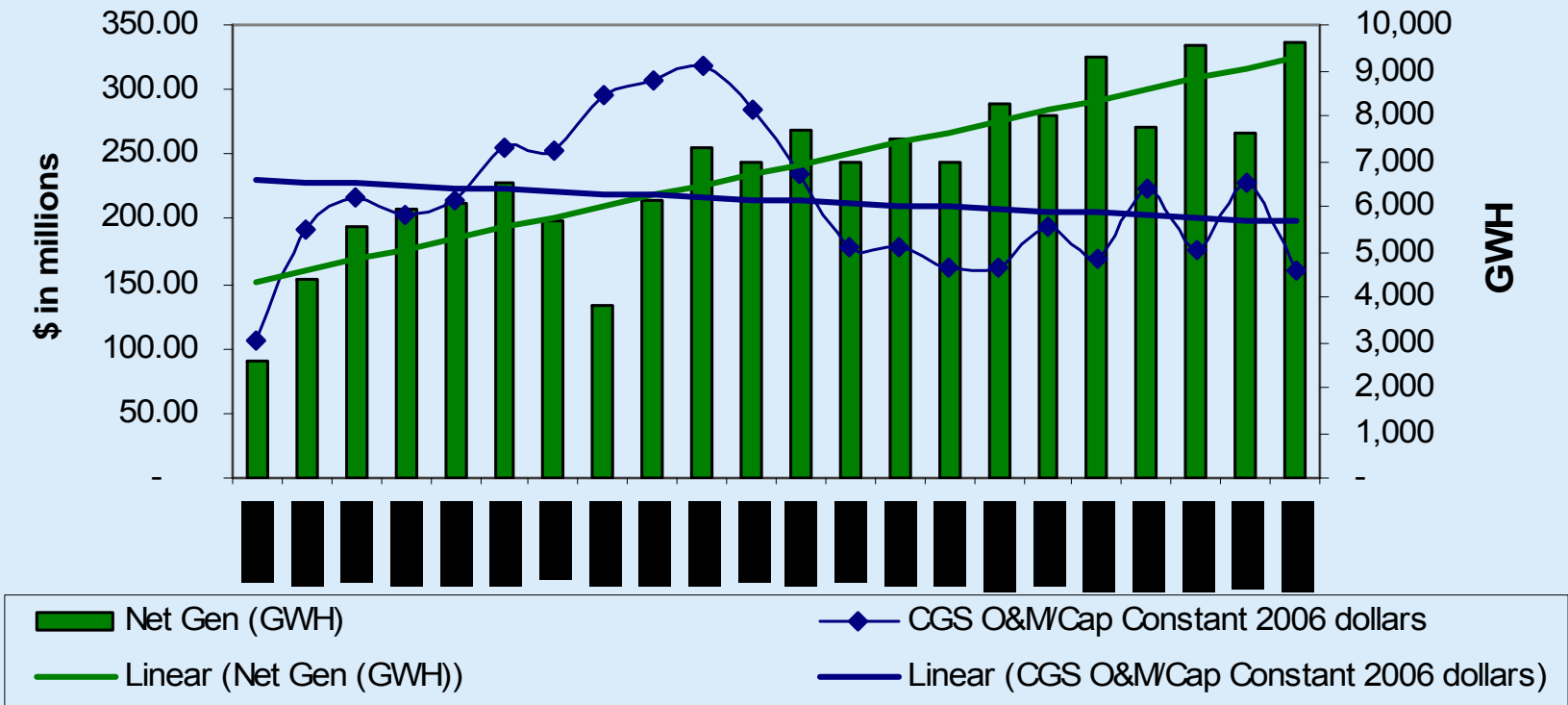


CGS Cost of Power

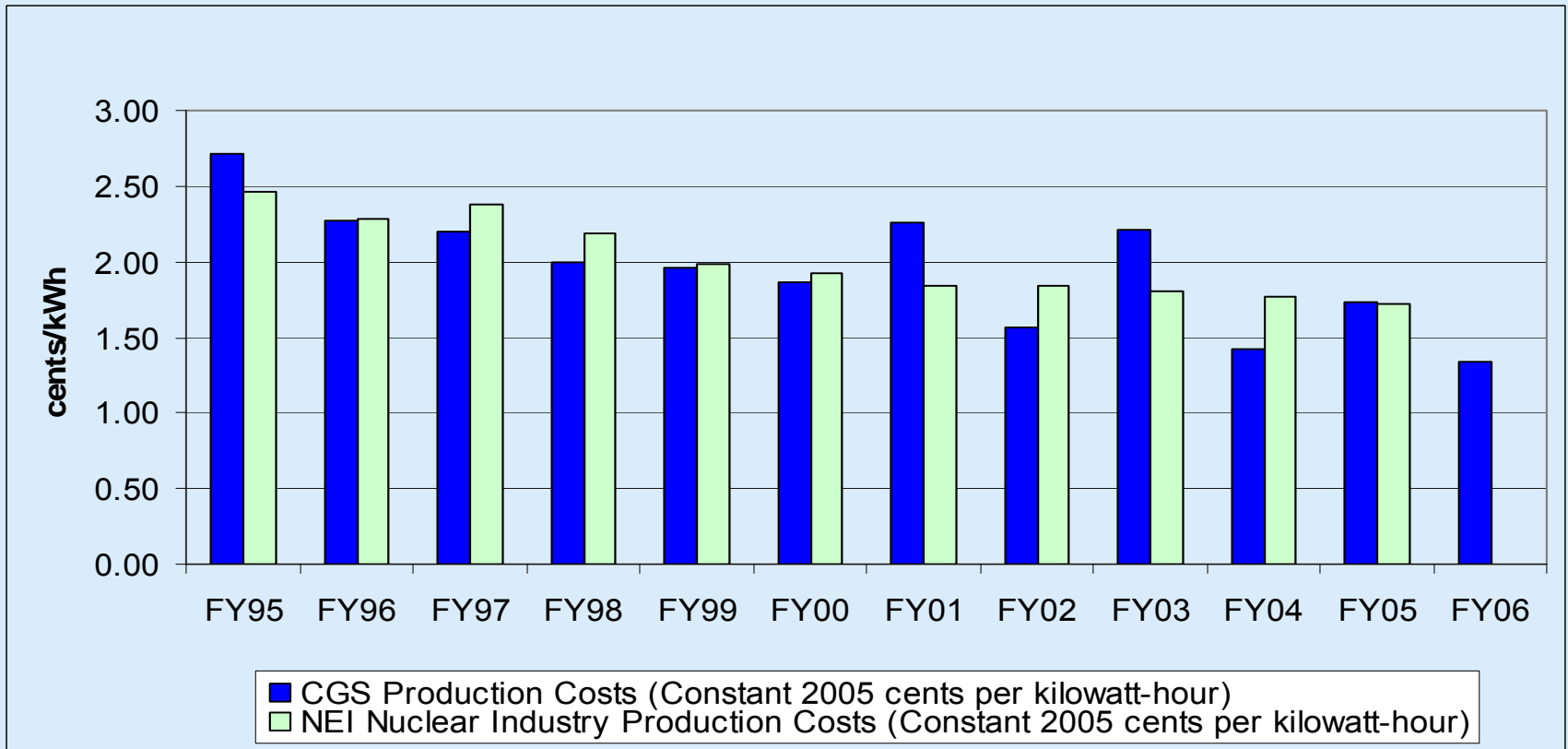


(1) Regional Basis includes O&M, A&G, Capital, Fuel and generating taxes.

CGS O&M and Capital Costs Versus Net Generation

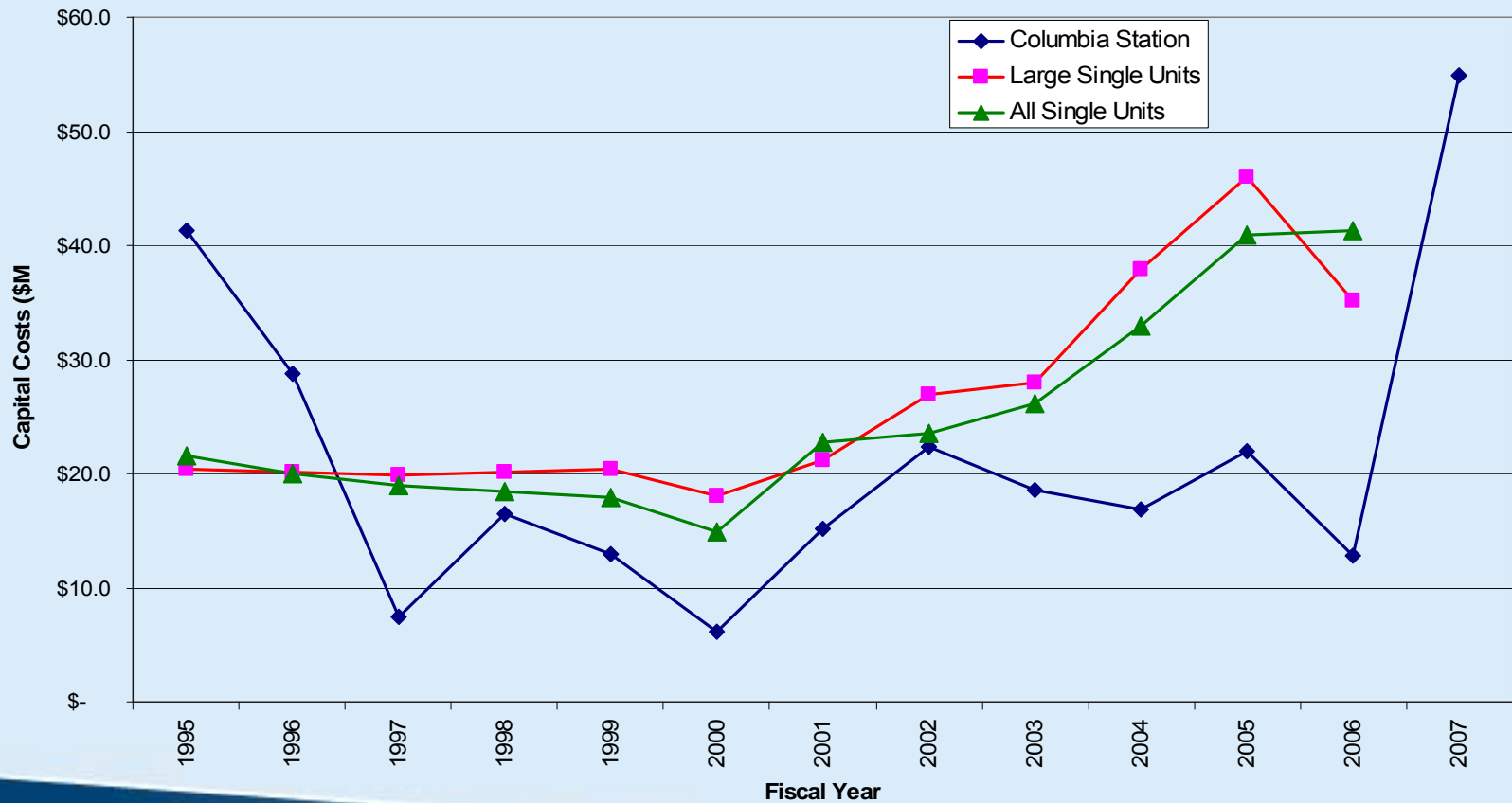


CGS versus US Nuclear Industry Average Production Costs 1995 - 2005

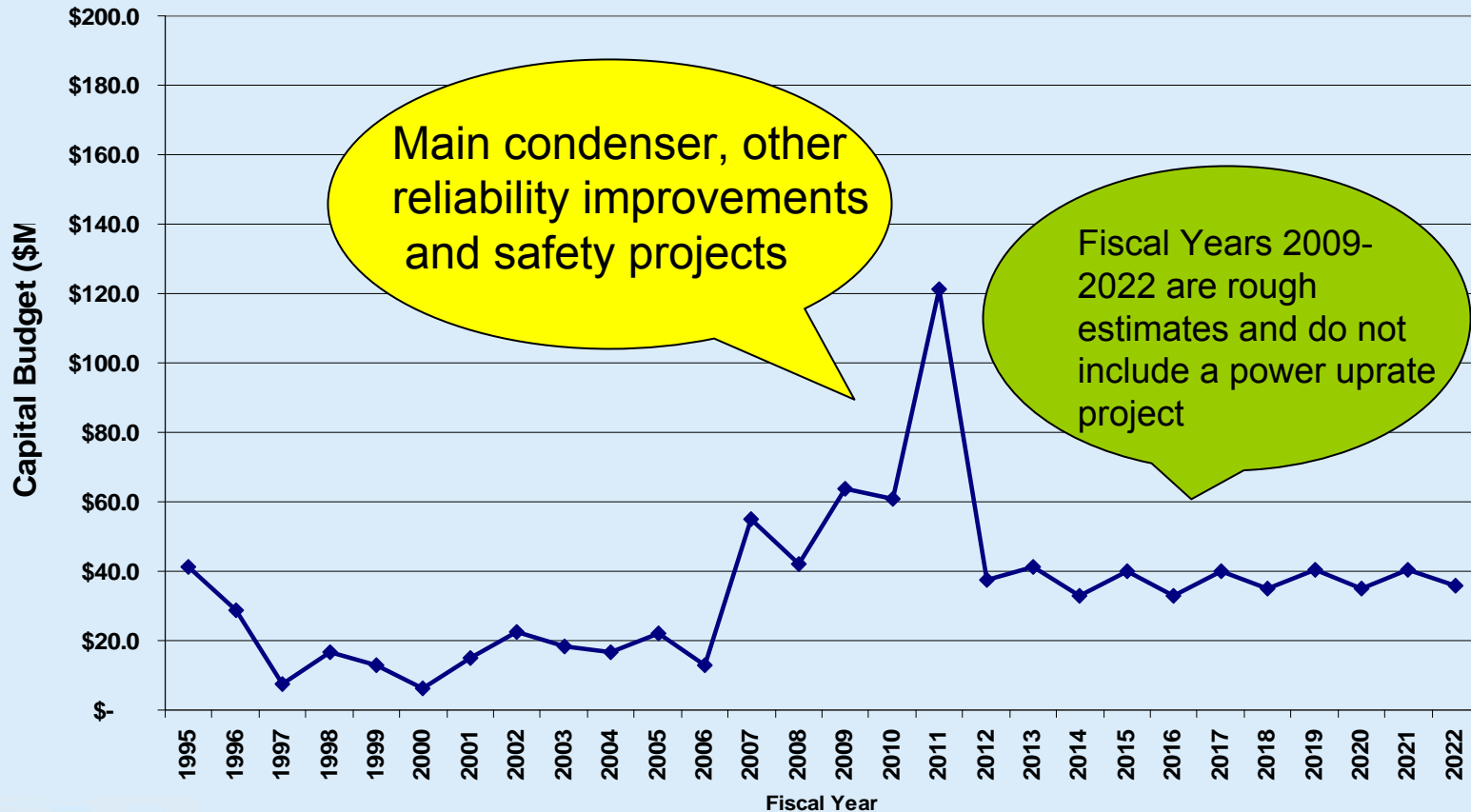


Industry Production Costs include O&M (less A&G and Benefits) plus Fuel Costs “FERC Basis – Total Production Costs”.

Historical Capital Costs – Annualized Constant 2006 dollars



Capital Projects Long-Range Plan – Annualized Constant 2006 dollars



Improvement Philosophy

- ✦ Nuclear Safety is our number one priority not subject to compromise
- ✦ Improve equipment reliability
- ✦ Predictable long-range planning

Future Challenges

- ✦ Staffing
 - Retention
 - Recruitment
- ✦ Component and raw material availability
- ✦ Nuclear fuel costs

✦ For a copy of this presentation go to:
www.energy-northwest.com